



PIAZZA DEL LIBERTY, 4 - MILAN

LIBERTY TOWER

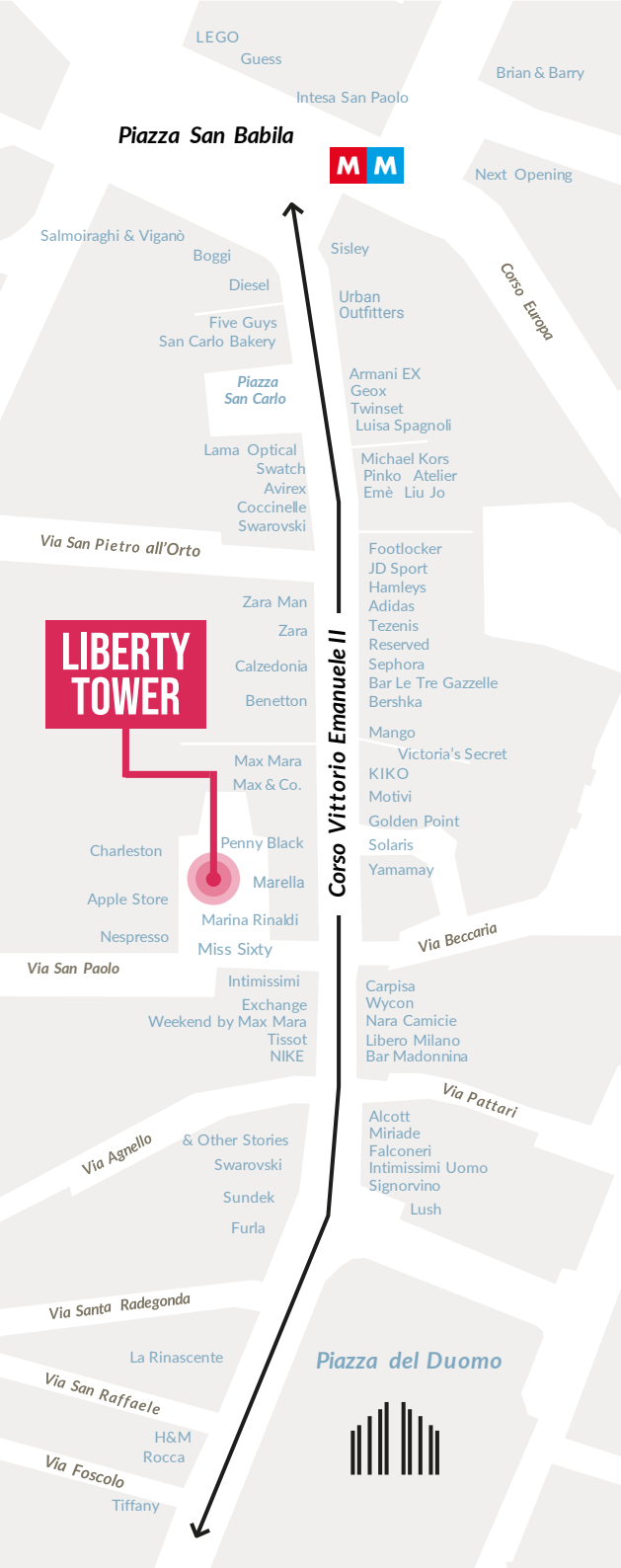
LOCATION OVERVIEW



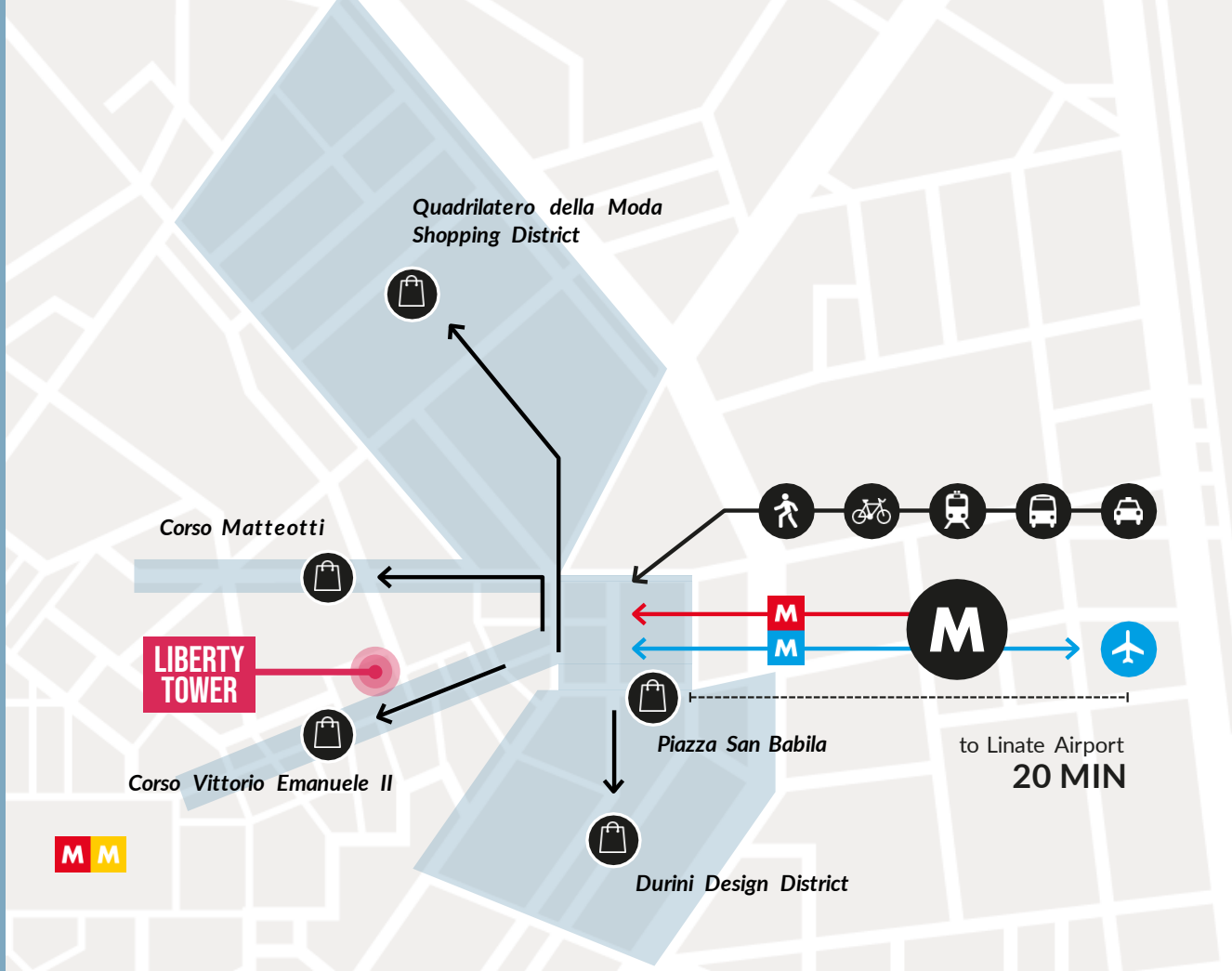
Piazza del Liberty is today one of the most icon landmark in Milan thanks to the requalification of the square designed by Norman foster for Apple which has given to the square a modern and international view.

The Liberty Tower Perfectly connected, rising in the most prestigious Milanese business and shopping districts.

In between Piazza San Babila, Corso Vittorio Emanuele, Galleria Vittorio Emanuele and the Quadrialetero della moda, stands out, with its exclusive 12 floors tower with glass façade.



LOCATION OVERVIEW



Distances



1 MIN: M1/M4 San Babila
5 MIN: M1/M3 Duomo



7 MIN: Cadorna FN
10 MIN: Centrale FS



20 MIN: Linate Airport
50 MIN: Malpensa Airport



BUS LINES
54 - 60
61 - 84



TAXI STATIONS
Piazza San Babila
Piazza Duomo



BIKE STATIONS
S. Babila - S. Pietro all'Orto - Via
Borgogna - Piazza Meda



CAR SHARING
C.so Venezia - C.so Monforte
Via Hoepli - Via Borgogna

to Linate Airport
20 MIN



SURFACE BREAKDOWN

OPTION A

<i>FLOOR</i>	<i>DESTINATION USE</i>	<i>GLA (sq.m)</i>
FIRST	RETAIL	281
MEZZANINE	RETAIL	51
GROUND	RETAIL	132
TOTAL		464*

OPTION B

<i>FLOOR</i>	<i>DESTINATION USE</i>	<i>GLA (sq.m)</i>
MEZZANINE	RETAIL	51
GROUND	RETAIL	132
TOTAL		183*

* ON TOP EXTERNAL DEHOR OF ABOUT 40SMQ







RENOVATION PROJECT OF THE GALLERY

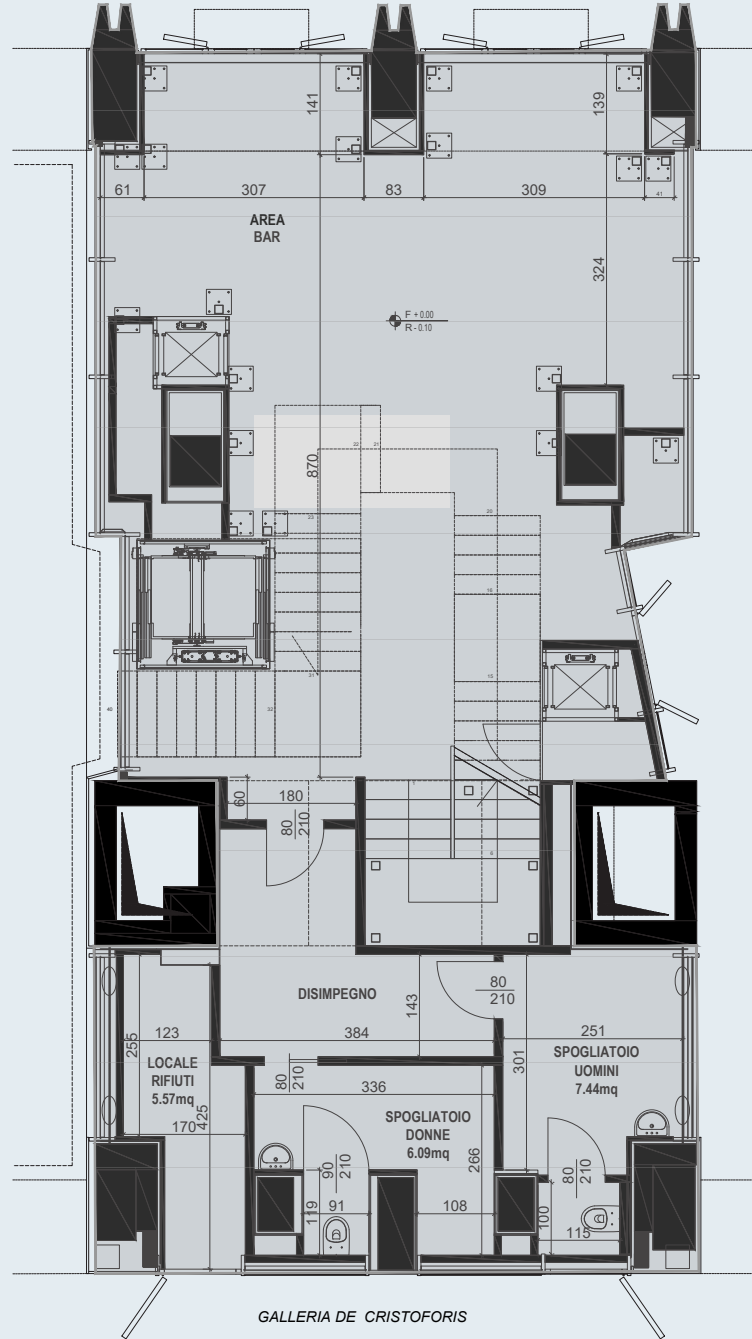


RENOVATION PROJECT OF THE GALLERY

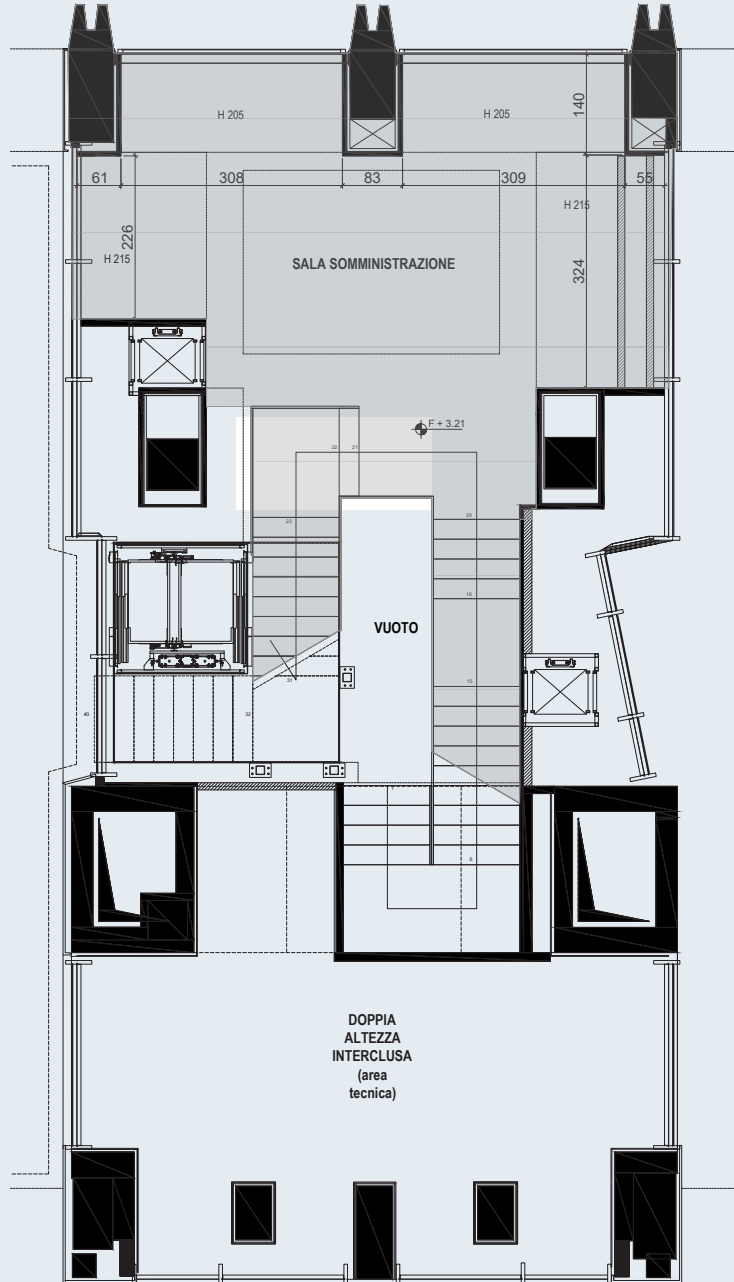


An iconic space, in an iconic location, for an iconic brand. A retail space right in the middle of Piazza del Liberty facing the amphitheatre and the glass fountain, new iconic symbols of the square. The unit is developed on three floors, all destined to retail use. The total surface is around 470 sqm and it's characterized by the impressive high windows facing the square.

GROUNDFLOOR PLAN



MEZZANINE PLAN



OUR CONTACTS

EXCLUSIVE AGENT



MILAN

Corso Matteotti, 10

20121

highstreet.italy@colliers.com